



# A Tale of Two Seasons

## Techniques for Early Spring

Captain Greg Peralta

[www.captgregp.com](http://www.captgregp.com)

@captgregp

[captgregp@gmail.com](mailto:captgregp@gmail.com)

# About Me

- Retired from guiding several year ago
- Still fish 3-5 times per week
- SAFMC – Coastal Pelagic AP
- No Pressure
  - Experiment
  - Tools
  - Techniques
- Share
  - Articles
  - Blog - [www.captgregp@gmail.com](mailto:www.captgregp@gmail.com)
  - Events
  - TV



# Early Spring

- Challenging time to fish
  - Weather Transition
  - Strong fronts
  - Windy conditions
- Pre-front (easy)
- Post-front (hard)
- Impact on fish
- Tools and techniques
- Q&A



# Pre-Front Conditions

- Warm temperatures
- Light SW winds
- Stable or slowly moving barometer
- Fish actively feeding
- Shallow water
  - Oyster bars
  - Structure
- Use what you see





# Pre-Front Redfish Tools

- St. Croix Legend Elite 7' ML fast action
- Shimano 2500 frame CI4
- PowerPro 10/2 high visibility braid
- 15# fluorocarbon leader
- Knots matter
- Lures
  - Z-Man StreakZ on a 4/0 16<sup>th</sup> ounce keel weighted hook
  - Z-Man MinnowZ on 1/4 ounce Trout Eye Jig
  - Rapala Skitter V
- Buoyant Characteristics
  - Vertical presentation
  - Rate of decent
- Retrieve technique
  - Hop and stop
  - Sweep and swim



# Pre-Front Redfish Techniques

- Oyster bars or structure
- Lower stages of the tide
- Baitfish seek shelter
  - Finger mullet
  - Mud minnows
- Determines lure selection
  - Color
  - Size
- Presentation
  - Get it close
  - They will eat it



# Pre-Front Trout Tools

- St. Croix Legend Elite 7' Light fast action
- Shimano 1000 frame CI4
- PowerPro 10/2 high visibility braid
- 10-12# fluorocarbon leader
- Lures
  - Z-Man StreakZ 3.75 on 3/16 oz. Trout Eye Finesse Jig
  - Rapala X-Rap XR08 (suspending)
- Retrieve technique
  - Sweep and swim





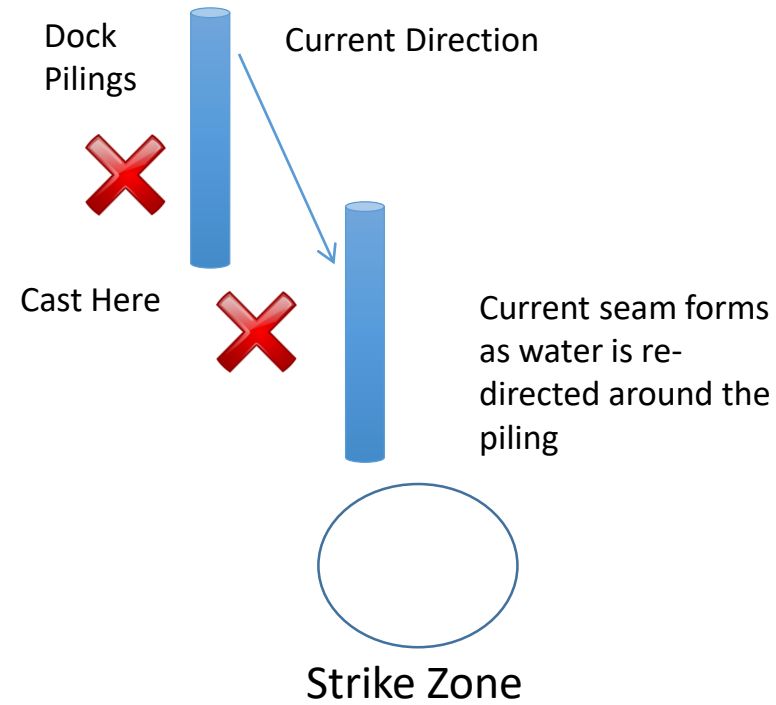
# Pre-Front Trout Techniques

- Oyster bars or pilings
- Depth transition
- Clear moving water
- Current seams
- Bait check
  - Color
  - Size





# How to Work Dock Pilings



Find the depth transition  
Short accurate casts

- Fish hold into the current close to the piling
- Cast past the piling
- Lure must sink to the bottom before entering the strike zone
- Skip casting proficiency is a must
- Immediately influence direction of the fish

# Post-Front Conditions

- Cool temperatures
- Light NE winds
- Rapidly rising barometer
- Fish not actively feeding
- Deeper water
  - Structure
  - Depth transitions
- Look before you cast
  - Read the shoreline
  - Use Depthfinder



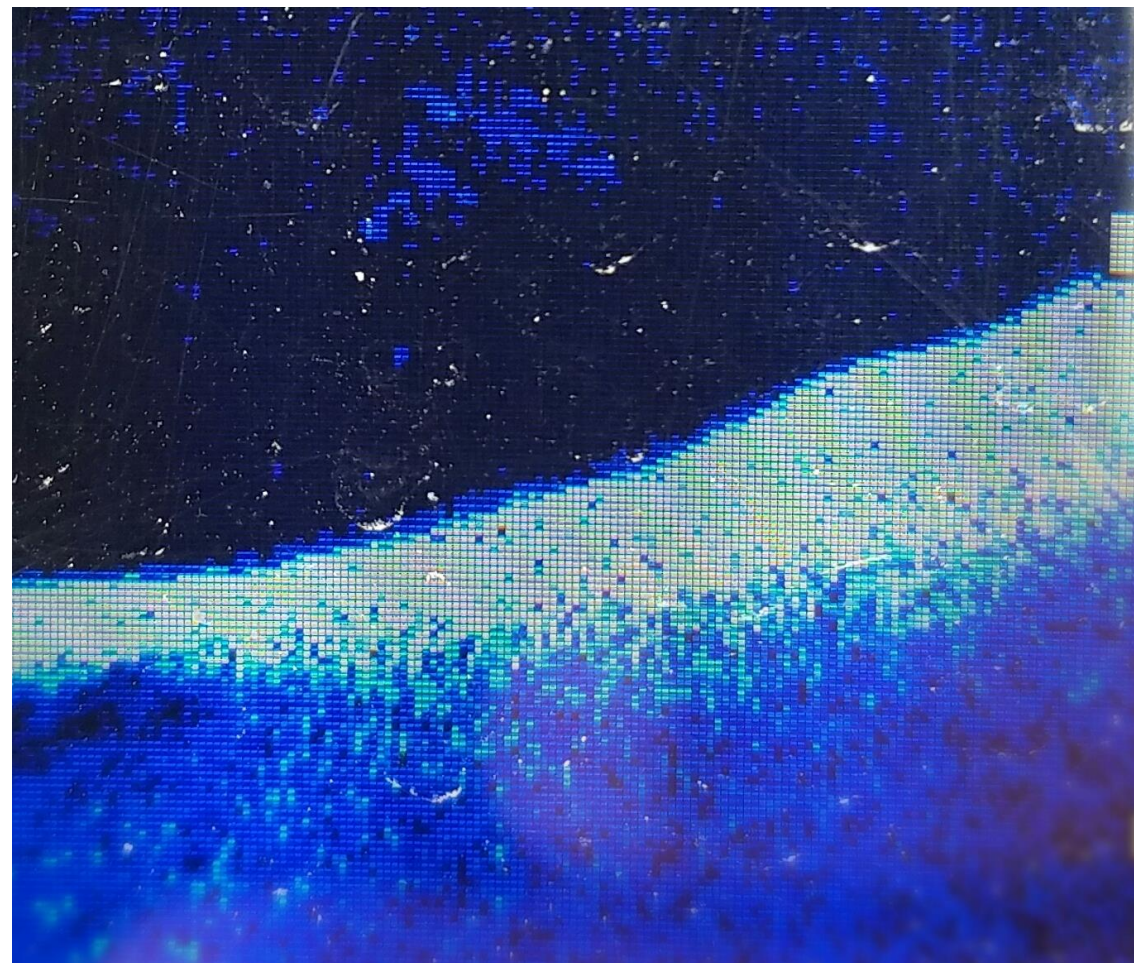
# Post-Front Trout Tools

- St. Croix Legend Elite 7' L fast action
- St. Croix Pan Fish 6'9" UL
- Shimano 1000 frame CI4
- PowerPro 10/2 high visibility braid with 10-12# fluorocarbon leader
- Lures
  - Z-Man StreakZ 3.75 on a Trout Eye Finesse Jig
  - Z-Man TRD on Mushroom Head Jig
- Reaction strike
  - Sweep and swim



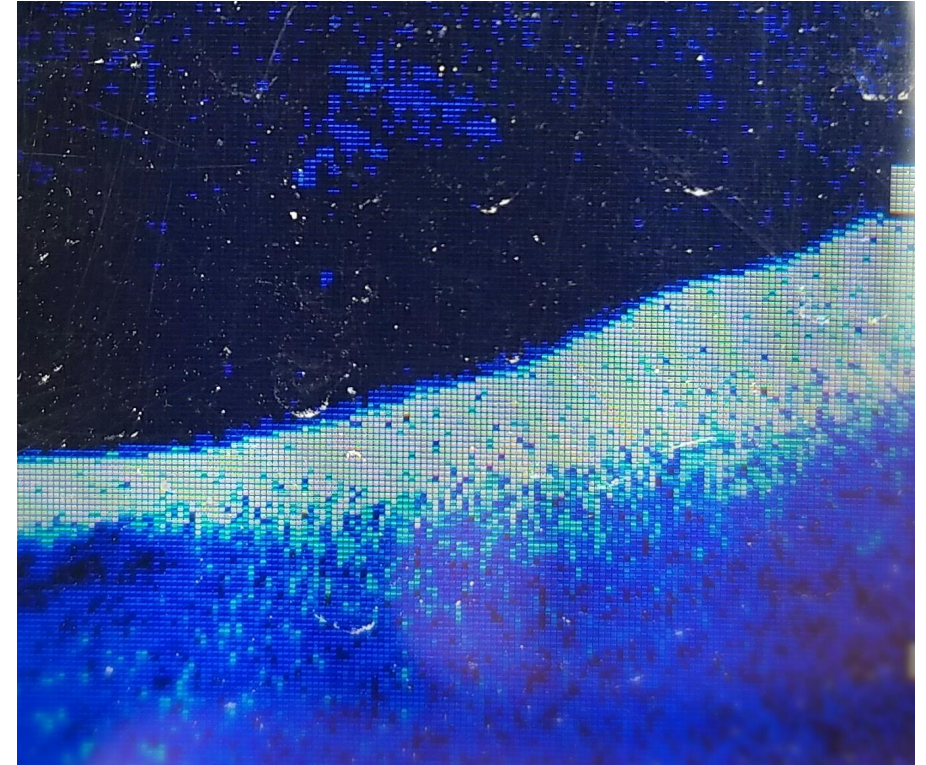
# Post-Front Trout

- Depth transitions
- In active (not eating)
- Reaction strike
- Drives lure selection
  - Size
  - Color
- Retrieve





# Side by Side View of Depth Transition



# How to Work a Depth Transition

## Fish orient into current

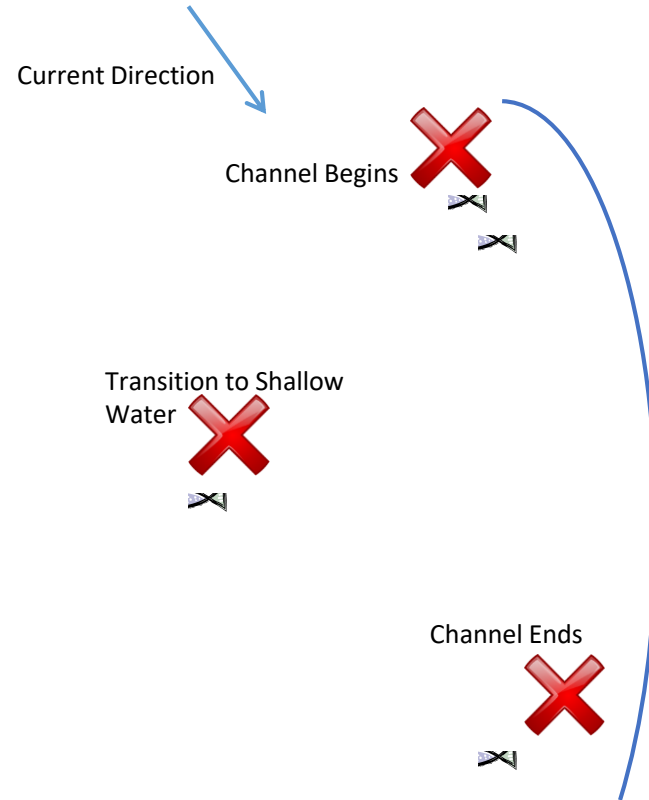
- Adjust cast
- Use current in presentation

## Focus on transition

- Thoughtfully position boat
- Maximize time in the zone

## Sweep and swim retrieve

- Less belly
- Reaction strike





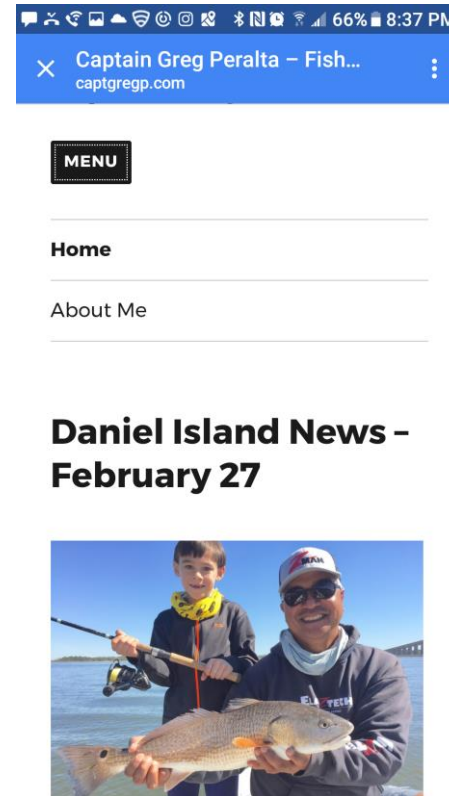
# Follow Me



@captgregp

The  
**Daniel  
Island  
News**

<http://thedanielislandnews.com/eedition>



[www.captgregp.com](http://www.captgregp.com)



# A Tale of Two Seasons

## Techniques for Early Spring

Captain Greg Peralta

[www.captgregp.com](http://www.captgregp.com)

@captgregp

[captgregp@gmail.com](mailto:captgregp@gmail.com)